

OVER **30** YEARS IN THE MARKET



LINTER GROUP
SOLUTIONS FOR INDUSTRY



MULTIDISCIPLINARY
DESIGNING



MANUFACTURE OF
MACHINERY AND
EQUIPMENT



DOMESTIC AND FOREIGN
MARKETS COMMERCIAL
ACTIVITY



EPC PROJECTS



SPECIALIST
SERVICES



INSTALLATION OF ELECTRICAL, POWER
GENERATION AND INDUSTRIAL
AUTOMATION SYSTEMS



www.lintergroup.eu

OVER 30 YEARS IN THE MARKET

LINTER GROUP ENTITIES AND PARTNER COMPANIES

TRANSPORT SYSTEMS
RAW MATERIALS PROCESSING
EQUIPMENT



TRANSPORT SYSTEMS
COMPONENTS



SPECIALIST MINING AND
TUNNELLING
SERVICES



ENGINEERING DESIGN



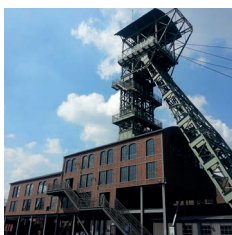
INDUSTRIAL
AUTOMATION



RENEWABLE ENERGY SOURCES



AREAS OF ACTIVITY:



HARD COAL MINING
AND PROCESSING



AGGREGATE AND MINERAL
PITS AND QUARRIES



FOOD PROCESSING
INDUSTRY



CHEMICAL INDUSTRY



WASTE WATER
TREATMENT PLANTS



CEMENT PLANTS



POWER GENERATION



METALLURGICAL INDUSTRY



ENGINEERING DESIGN

ENGINEERING DESIGN OFFICE:

BPL Linter is a multidisciplinary engineering design office employing a team of highly qualified design and construction engineers with many years of experience in various industrial sectors. Using the 3D design modelling method, we effectively eliminate errors/collisions and optimise technical solutions. Our office specialises in the engineering design of:

- Transport systems
- Machinery, equipment and plants for mechanical processing of coal and mineral resources
- Complete technological and production lines for the metallurgical, power generation, chemical, cement production, food processing, shipbuilding and other branches of the industry.

THE OFFICE'S OFFER COMPRISES:

- Multidisciplinary engineering designs
- Civil engineering designs together with acquisition of administrative decisions and permits
- Machinery and equipment workshop documentation
- Acceptance and certification documentation



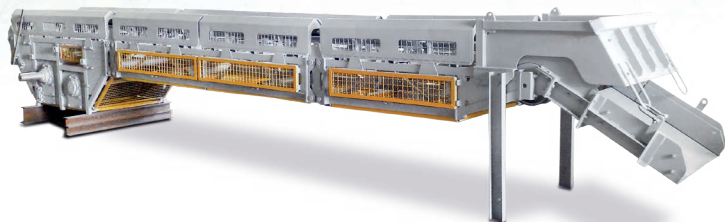
OVER 30 YEARS IN THE MARKET

PRODUCTION

PRODUCTION OF TRANSPORT SYSTEMS:

CONVEYORS:

- belt conveyors
- bucket elevators
- scraper conveyors
- drag conveyors



MANUFACTURE OF EQUIPMENT FOR ENRICHMENT AND PROCESSING OF MINERALS RESOURCES:

LINTER S.A. has considerable experience in developing complex technologies and manufacturing equipment and machinery for mechanical coal processing plants such as:

- dense medium separators,
- gravity jigs,
- thickeners,
- heavy liquids preparation and regeneration lines,
- technologically advanced filter presses.

STEEL STRUCTURES:

- support structures, trestle bridges, conveyor routes,
- elements of flue gas discharge and desulphurisation systems,
- platforms, handrails, supports,
- silos, tanks and many other elements,
- mechanical machining.



PRODUCTION OF PARTS AND COMPONENTS FOR CONVEYORS:

- rollers
- drums
- belts



PRODUCTION OF ROLLERS

The company MET-ROLL Sp. z o.o. specialises in engineering design, manufacture and sale of rollers for belt conveyors and other transport equipment.

Its main customers include hard coal mines, mineral resource quarries and mines, cement plants, power plants, combined heat and power plants as well as other customers using continuous transport systems.

The company's development strategy is oriented towards both the domestic and foreign markets.

The objective of providing the highest quality of products is achieved by using a continuous production process supervision system based on the PLN ISO 9001 standard.

Environmental measures integrated with production processes ensure a high level of product quality and environmental protection.

Rollers manufactured by MET-ROLL Sp. z o. o. are certified for use in both underground and strip mines.

- **DIAMETERS DEPENDING ON ROLLER TYPES:** 51; 54; 63,5; 89; 108; 133; 159; 194; 215; 245,
- **LENGTH:** 100 mm - 2000 mm,
- **COATED WITH PRIMER AND FINISHING POWDER PAINT,**
- **HOT DIP GALVANISED,**
- **RUBBERISED
(VULCANISED OR COATED)**
- **FOR GRAVITY AND POWER-DRIVEN
ROLLER TABLES**



OVER 30 YEARS IN THE MARKET

EPC PROJECTS

Having appropriate resources as well as qualified managerial and engineering staff, we execute and supervise industrial investment projects on a turnkey basis,

– from the development of a technical concept and the preparation of an engineering design to the commissioning of an assembled system. Linter S.A. is involved in the execution of investment projects on both the domestic and foreign markets, for example in Sweden, Morocco, Algeria and Serbia.



The construction of a conveyor bridge in the **Chwałowice** coal mine



The delivery of DISA separators for the **Bogdanka** coal mine



The construction of a steel bar cooling line, the **Stalowa Wola** metallurgical plant

SUCCESS



SUPPORT AND SERVICE



START-UP



DELIVERY AND ASSEMBLY



PRODUCTION



ENGINEERING DESIGN



SOLUTIONS



ANALYSIS



NEED



CLIENT



OVER 30 YEARS IN THE MARKET

SELECTED EXAMPLES OF DOMESTIC AND INTERNATIONAL PROJECTS



The project providing for the replacement of asynchronous motors together with accompanying equipment, The ELMA-LABIOD cement plant, **Algeria**



The project providing for the replacement of a 300 t/h screen for a phosphate installation, OCP SA, **Morocco**

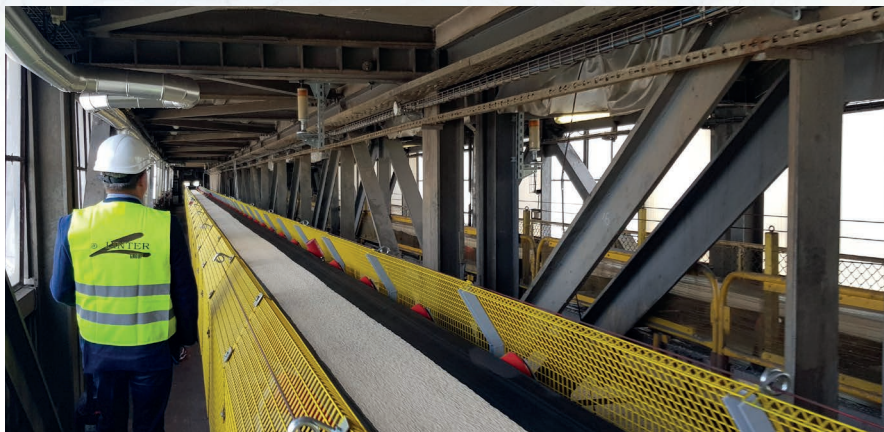


The replacement of a conveyor bridge for raw iron ore transport, LKAB, **Sweden**

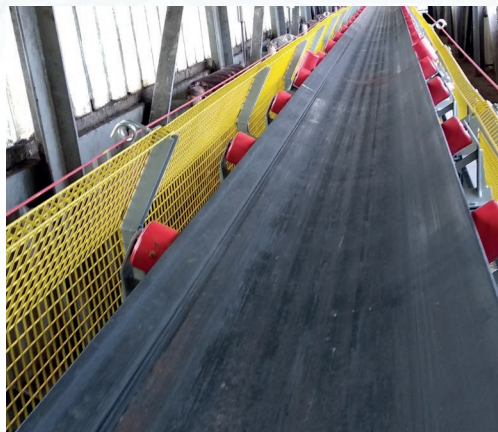


OVER 30 YEARS IN THE MARKET

SELECTED EXAMPLES OF DOMESTIC AND INTERNATIONAL PROJECTS



The overhaul of a conveyor system - Grupa Azoty – Zakłady Azotowe **Kędzierzyn Koźle**



The construction of a stone belt conveying system with a storage bunker and a loading station with a possibility of loading onto trucks in the **Janina coal mine**



The reconstruction of the post-flotation waste transport system at the tailings ponds in the **Bolesław mining and metallurgical complex**



COMMERCIAL ACTIVITY IN THE DOMESTIC AND FOREIGN MARKETS

The development of our commercial activities at home and abroad is connected with close and long-term cooperation with leading domestic and foreign manufacturers.

Based on these relations, LINTER S.A. offers and distributes equipment, components and spare parts of its business partners in addition to its own manufacturing portfolio.

The examples of related projects include the following:

UNDERGROUND MINING

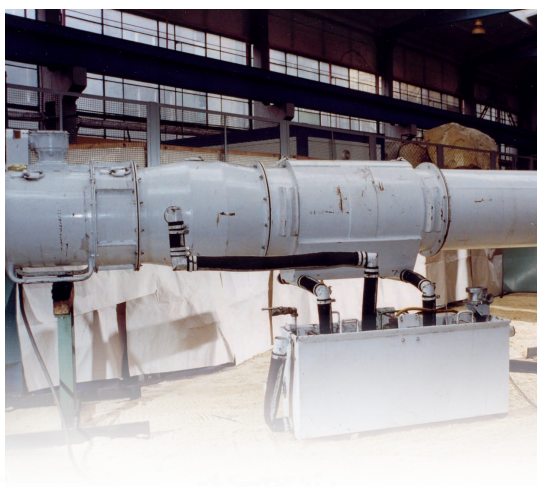
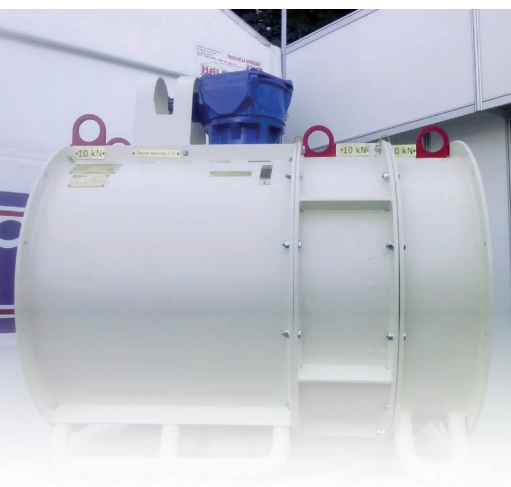
- mine fans and dust extraction systems
- mine hoists and turnstiles
- carriages and transport platforms
- hydraulic and friction props
- rail-mounted overhead loaders and roadheading machines

SURFACE INSTALLATIONS

- screens, vibrating feeders
- crushers
- loading spouts

EQUIPMENT AND SPARE PARTS FOR INDUSTRIAL INSTALLATIONS

- electric motors, motoreducers, gears, pumps
- conveyor belts, sieves for screens
- transformers, inverters, power generators



OVER 30 YEARS IN THE MARKET

SPECIALIST MINING SERVICES

THE COMPANIES LINTER MINING SP. Z O.O. AND PRG LINTER S.A. PROVIDE THE FOLLOWING SERVICES

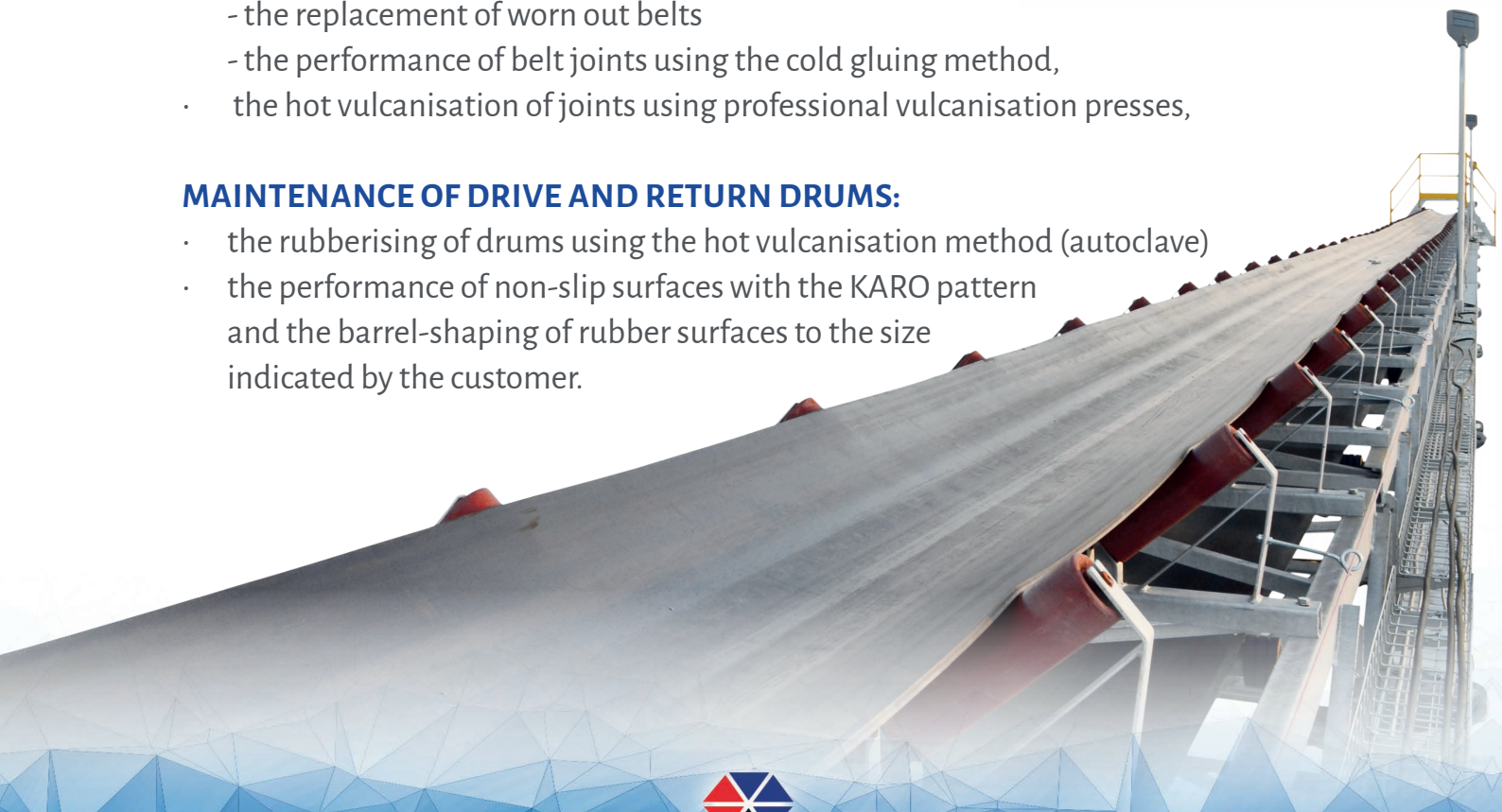
- the drivage of excavation of underground mine workings (according to methods agreed with the customer, e.g. using heading machines or explosives),
- the reconstruction of mine workings,
- the reinforcement of mine workings - guniting, anchoring, gluing
- the installation, assembly and maintenance of mining machinery and equipment,
- the liquidation of mine workings,
- tunnelling services.

MAINTENANCE OF CONVEYOR BELTS

- the supply of conveyor belts from leading domestic and foreign producers
- the vulcanisation of cleat and Chevron profile conveyor belts
- the performance of conveyor belt maintenance services by a dedicated team:
 - the replacement of worn out belts
 - the performance of belt joints using the cold gluing method,
- the hot vulcanisation of joints using professional vulcanisation presses,

MAINTENANCE OF DRIVE AND RETURN DRUMS:

- the rubberising of drums using the hot vulcanisation method (autoclave)
- the performance of non-slip surfaces with the KARO pattern and the barrel-shaping of rubber surfaces to the size indicated by the customer.



INSTALLATION OF ELECTRICAL AND INDUSTRIAL AUTOMATION SYSTEMS



The company VOLEN S.A. specialises in providing services related to investment projects in the power engineering industry as well as in performing works related to the automation of production and industrial processes. It executes turnkey projects in the commercial power generation sector (power plants, combined heat and power plants, transmission and distribution networks) and the industrial power generation sector (refineries, chemical and nitrogen plants, metallurgical plants, mining plants), as well as in the field of automation of production and industrial processes.

Volen S.A. offers investors reliable solutions from electrical power installations, through automation of production processes, to integration of facilities into a coherent control and supervision system.

RENEWABLE ENERGY SOURCES

The company Linter Energia Sp. z o.o. focuses on electricity and gas trading. It designs, implements and executes tasks related to renewable energy sources. It designs and builds photovoltaic installations and power plants.

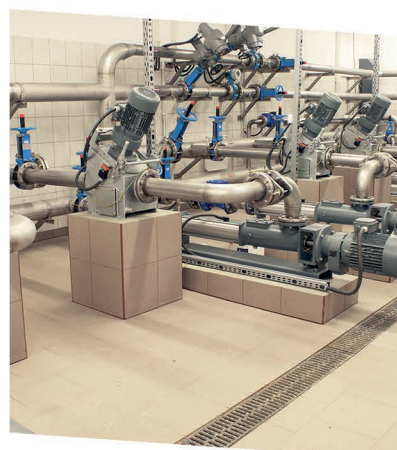
In the Polish market, it actively introduces innovative solutions aimed at savings in electricity consumption, such as LED lighting. The company offers new technologies in lighting infrastructure, energy management and construction of RES installations significantly reducing CO₂ emissions.



OVER **30** YEARS IN THE MARKET



The LINTER Group fulfils all requirements applicable to design, manufacturing, assembly and maintenance operations as specified in the certificate proving its compliance with the ISO 9001 quality management system standard.



MANAGEMENT OFFICE

ul. Budowlana 5G
40-301 Katowice
tel. + 48 32 793 71 12
fax + 48 32 793 71 14
sekretariat@lintergroup.eu

ADDRESS FOR CORRESPONDENCE

ul. Piłsudskiego 57A
32-340 Wolbrom
KRS: 0000392386,
NIP: 6371923050,
REGON: 357211217

EXPORT OFFICE

 +48 662 364 010
 +48 607 088 107
 +48 508 008 670
export@lintergroup.eu



www.lintergroup.eu